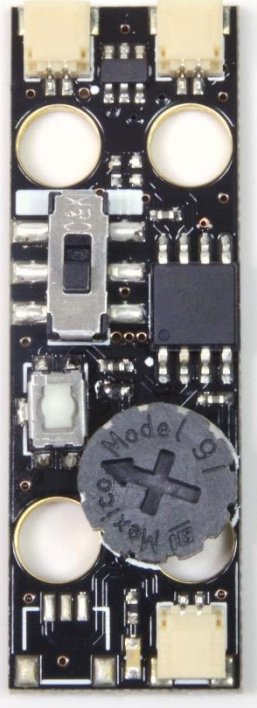
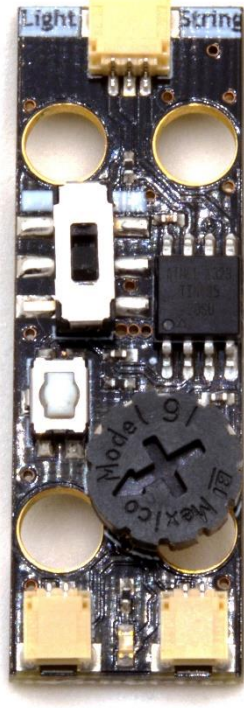


# Brickstuff Lighting Effect Controllers: Comparison



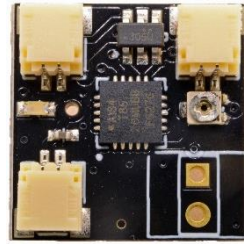
## TRUNK01

Production Dates: 2012-  
 Outputs: 2  
 Total Lighting Programs: 12  
 Simultaneous Programs: 1  
 Variable Speed: Yes  
 # of LEDs Supported: 100+  
 LED Types Supported:  
 \* Pico LEDs  
 \* Light Strips  
 \* High Power LEDs



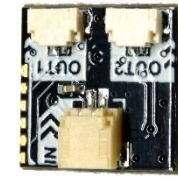
## TRUNK02

Production Dates: 2013-  
 Outputs: 3-36  
 Total Lighting Programs: 11  
 Simultaneous Programs: 1  
 Variable Speed: Yes  
 # of LEDs Supported: 3-36  
 LED Types Supported:  
 \* Pico LEDs



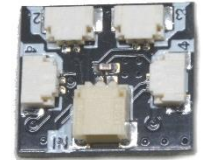
## TRUNK03

Production Dates: 2014-2015  
 Outputs: 2  
 Total Lighting Programs: 1  
 Simultaneous Programs: 1  
 Variable Speed: Yes  
 # of LEDs Supported: 100+  
 LED Types Supported:  
 \* Pico LEDs  
 \* Light Strips  
 \* High Power LEDs



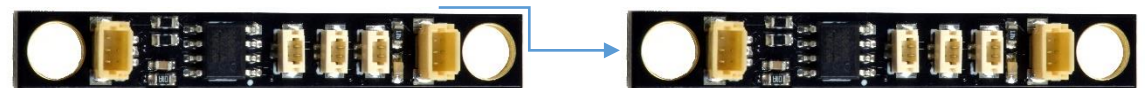
## TRUNK06

Production Dates: 2016-  
 Outputs: 2  
 Total Lighting Programs: 1  
 Simultaneous Programs: 1  
 Variable Speed: No  
 # of LEDs Supported: 2  
 LED Types Supported:  
 \* Pico LEDs



## TRUNK07

Production Dates: 2016-  
 Outputs: 4  
 Total Lighting Programs: 1  
 Simultaneous Programs: 1  
 Variable Speed: No  
 # of LEDs Supported: 4  
 LED Types Supported:  
 \* Pico LEDs



## TRUNK02 DAUGHTERBOARDS

TRUNK02 uses daisy-chained daughterboards to provide its lighting outputs. A minimum of one daughterboard (3 LED outputs) is required. A maximum of 12 daughterboards (36 total individually-controllable LEDs) is supported. Daughterboards connect end-to-end with special cables (1.5", 12", and 24" available). **Only Pico LEDs are supported as outputs.**